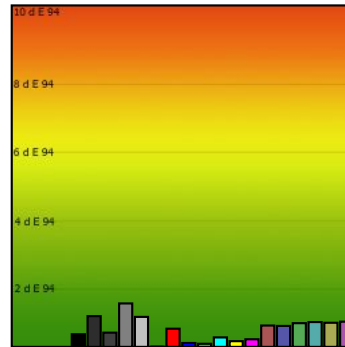
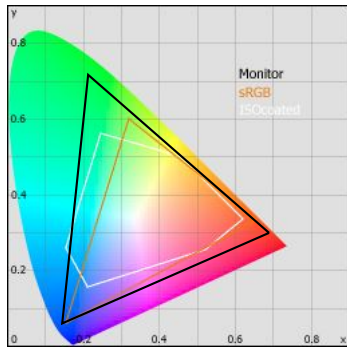


Monitor Calibration Report

Date: 2008-10-29 22:36:42
 Profile: C:/Windows/system32/spool/DRIVERS/COLOR/BEP_29.10.08-6500K-22-100cd.icc



Target Black Luminance = 0.1 Cd/m2

Calibration:

	Target	Current
Gamma	2.2	2.1
Kelvin	6500	6386
cd/m2	100	93

Whitepoint

XYZ	87.30	93.18	97.44
XYZ (normalized):	93.69	100.00	104.57
Luminance	93.2 Cd/m2		
Next Temperature	6386 Kelvin		
Assumed Target Whitepoint	6400 Kelvin		
Distance to assumed Target Whitepoint	18.3 deltaE		

Blackpoint:

Luminance 0.1 Cd/m2
 Target Black Luminance = 0.1 Cd/m2

Graybalance:

Color	Kelvin	Chroma	Gamma
17% heavy dark	6335	0.44	2.21
25% dark gray	6504	1.22	2.17
50% gray	6581	2.44	2.14
75% light gray	6418	3.20	2.09
100% white	6386	3.57	

Average Gamma = 2.15

Profile Statistic:

Note: The deltaE calculation takes the blackpoint into account!
Based on chromatic adaptation Bradford

Color	R	G	B	L	a	b	dE	dE94
0% black	0	0	0	1.2	-0.0	-1.0	0.4	0.4
17% heavy dark	45	45	45	17.0	0.7	-0.3	0.9	0.9
25% dark gray	64	64	64	26.9	-0.2	-0.4	0.4	0.4
50% gray	128	128	128	54.9	-0.8	-0.7	1.3	1.3
75% light gray	192	192	192	79.0	-0.4	-0.0	0.9	0.9
100% white	255	255	255	100.0	0.0	-0.0	0.0	0.0
red	255	0	0	58.2	106.9	89.5	2.5	0.5
green	0	255	0	85.8	-130.4	92.0	0.5	0.1
blue	0	0	255	30.7	63.0	-114.5	0.3	0.1
cyan	0	255	255	88.9	-90.1	-18.3	0.9	0.3
magenta	255	0	255	63.8	113.9	-58.2	0.8	0.2
yellow	255	255	0	97.4	-14.3	110.2	0.6	0.2
pastell-red	170	85	85	49.4	50.8	20.8	0.8	0.6
pastell-green	85	170	85	62.8	-62.8	38.0	0.6	0.6
pastell-blue	85	85	170	40.4	17.9	-49.7	0.7	0.7
pastell-cyan	85	170	170	64.6	-46.5	-10.9	0.8	0.7
pastell-magenta	170	85	170	51.9	57.5	-30.3	0.8	0.7
pastell-yellow	170	170	85	69.4	-9.0	48.7	0.9	0.7
Average							0.8	0.5
Maximum							2.5	1.3

Metric:

	0%	50%	100%
X	0.1	19.7	87.3
Y	0.1	21.2	93.2
Z	0.2	22.6	97.4
K		6581	6386