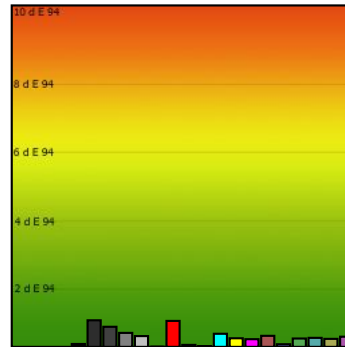
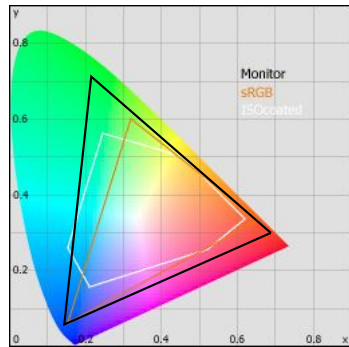


Monitor Calibration Report

Date: 2008-11-11 14:16:18
 Profile: C:/Windows/system32/spool/DRIVERS/COLOR/BEP_11.11.08-5500K-22- 95cd.icc



Target Black Luminance = 0.1 Cd/m2

Calibration:

	Target	Current
Gamma	2.2	2.2
Kelvin	5500	5472
cd/m2	95	94

Whitepoint

XYZ	89.97	93.92	86.19
XYZ (normalized):	95.79	100.00	91.77
Luminance	93.9 Cd/m2		
Next Temperature	5472 Kelvin		
Assumed Target Whitepoint	5500 Kelvin		
Distance to assumed Target Whitepoint	7.8 deltaE		

Blackpoint:

Luminance 0.1 Cd/m2
 Target Black Luminance = 0.1 Cd/m2

Graybalance:

Color	Kelvin	Chroma	Gamma
17% heavy dark	5543	0.24	2.22
25% dark gray	5656	0.68	2.20
50% gray	5541	0.30	2.19
75% light gray	5507	0.10	2.16
100% white	5472	0.32	

Average Gamma = 2.19

Profile Statistic:

Note: The deltaE calculation takes the blackpoint into account!
Based on chromatic adaptation Bradford

Color	R	G	B	L	a	b	dE	dE94
0% black	0	0	0	1.3	-0.2	-1.4	0.1	0.1
17% heavy dark	45	45	45	16.9	-0.3	-0.1	0.8	0.8
25% dark gray	64	64	64	26.5	-0.7	-0.5	0.6	0.6
50% gray	128	128	128	54.1	-0.4	-0.3	0.4	0.4
75% light gray	192	192	192	78.3	-0.3	-0.2	0.3	0.3
100% white	255	255	255	100.0	0.0	-0.0	0.0	0.0
red	255	0	0	59.0	108.0	85.7	3.1	0.8
green	0	255	0	85.7	-137.0	89.4	0.1	0.1
blue	0	0	255	28.8	67.7	-116.7	0.1	0.0
cyan	0	255	255	88.5	-95.0	-18.4	0.9	0.4
magenta	255	0	255	63.9	116.4	-57.6	1.0	0.3
yellow	255	255	0	97.7	-14.8	107.3	0.8	0.2
pastell-red	170	85	85	49.0	51.8	20.6	0.8	0.3
pastell-green	85	170	85	62.2	-65.2	37.1	0.2	0.1
pastell-blue	85	85	170	39.4	17.9	-49.4	0.6	0.2
pastell-cyan	85	170	170	63.8	-48.6	-10.6	0.4	0.3
pastell-magenta	170	85	170	51.2	58.6	-29.7	0.6	0.2
pastell-yellow	170	170	85	68.9	-9.1	47.7	0.5	0.3
Average							0.6	0.3
Maximum							3.1	0.8

Metric:

	0%	50%	100%
X	0.1	19.8	90.0
Y	0.1	20.7	93.9
Z	0.2	19.2	86.2
K		5541	5472